

# Vostro 15

3000 Series

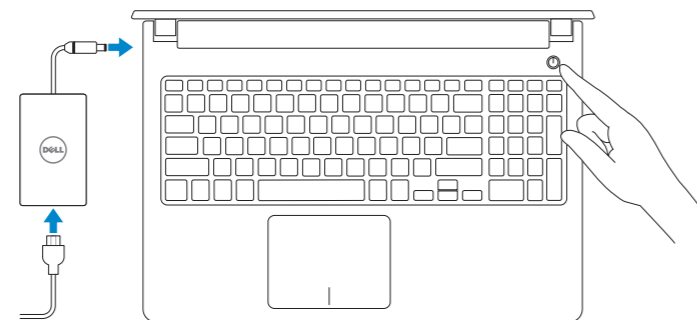
## Quick Start Guide

Pedoman Panduan Cepat



### 1 Connect the power adapter and press the power button

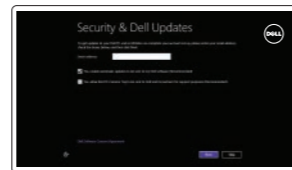
Sambungkan adaptor daya dan tekan tombol daya



### 2 Finish operating system setup

Tuntaskan penataan sistem operasi

#### Windows 8.1



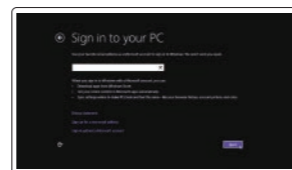
**Enable security and updates**  
Aktifkan keamanan dan pembaruan



**Connect to your network**  
Sambungkan ke jaringan Anda

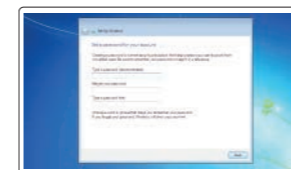
**NOTE: If you are connecting to a secured wireless network, enter the password for the wireless network access when prompted.**

**CATATAN:** Jika Anda menyambungkan ke jaringan nirkabel aman, masukkan kata sandi untuk akses jaringan nirkabel saat diminta.

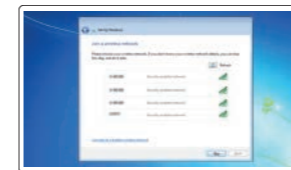


**Sign in to your Microsoft account or create a local account**  
Masuk ke akun Microsoft Anda atau buat akun lokal

#### Windows 7



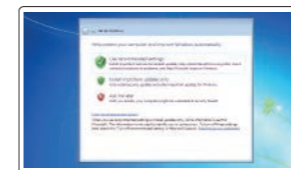
**Set up password for Windows**  
Atur kata sandi untuk Windows



**Connect to your network**  
Sambungkan ke jaringan Anda

**NOTE: If you are connecting to a secured wireless network, enter the password for the wireless network access when prompted.**

**CATATAN:** Jika Anda menyambungkan ke jaringan nirkabel aman, masukkan kata sandi untuk akses jaringan nirkabel saat diminta.



**Protect your computer**  
Lindungi komputer Anda

#### Ubuntu

**Follow the instructions on the screen to finish setup.**

Ikuti petunjuk pada layar untuk menyelesaikan pengaturan.

### Locate Dell apps in Windows 8.1

Mencari Lokasi aplikasi Dell di Windows 8.1



**Register your computer**  
Daftarkan komputer Anda



**Dell Backup and Recovery** **Backup, recover, repair, or restore your computer**  
Cadangkan, kembalikan ke kondisi normal, perbaiki, atau pulihkan komputer Anda



**Dell Help & Support**  
Bantuan & Dukungan Dell



**SupportAssist** **Check and update your computer**  
Periksa dan perbarui komputer Anda



**Product support and manuals**  
Dukungan dan panduan produk

**Contact Dell**  
Hubungi Dell

**Regulatory and safety**  
Regulasi dan keselamatan

**Regulatory model**  
Model regulatori

**Regulatory type**  
Jenis regulatori

**Computer model**  
Model komputer

[Dell.com/support](http://Dell.com/support)  
[Dell.com/support/manuals](http://Dell.com/support/manuals)  
[Dell.com/support/windows](http://Dell.com/support/windows)  
[Dell.com/support/linux](http://Dell.com/support/linux)

[Dell.com/contactdell](http://Dell.com/contactdell)

[Dell.com/regulatory\\_compliance](http://Dell.com/regulatory_compliance)

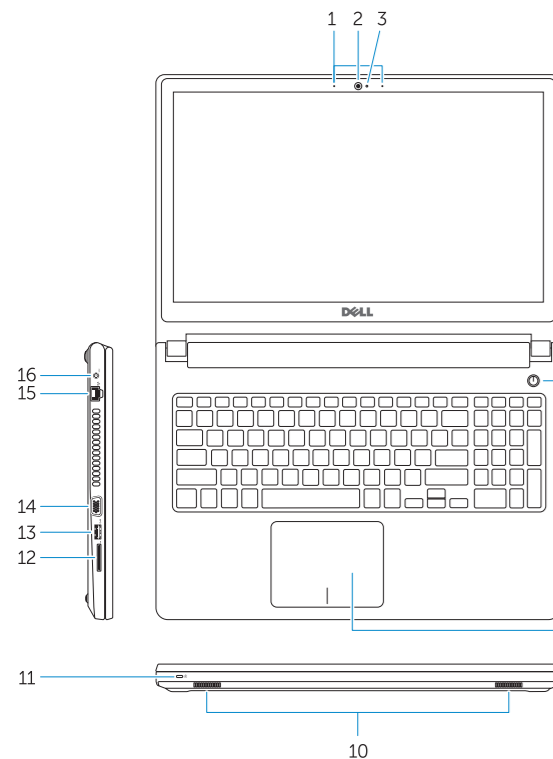
P52F

P52F003

Vostro 15-3559

# Features

Fitur



- 1. Camera
- 2. Camera-status light
- 3. Microphone
- 4. Security-cable slot
- 5. Power button
- 6. Optical drive
- 7. USB 2.0 connectors
- 8. Headset connector
- 9. Touchpad
- 10. Speakers
- 11. Power and battery-status light/ Hard-drive activity light
- 12. Memory-card reader
- 13. USB 3.0 connector
- 14. VGA connector
- 15. Network connector
- 16. Power connector
- 17. Battery
- 18. Service-Tag label

- 1. Kamera
- 2. Lampu status kamera
- 3. Mikrofon
- 4. Slot kabel pengaman
- 5. Tombol Daya
- 6. Drive optik
- 7. Konektor USB 2.0
- 8. Konektor headset
- 9. Panel sentuh
- 10. Speaker
- 11. Lampu daya dan status baterai/Lampu aktivitas hard disk
- 12. Pembaca kartu memori
- 13. Konektor USB 3.0
- 14. Konektor VGA
- 15. Konektor jaringan
- 16. Konektor daya
- 17. Baterai
- 18. Label Tag Servis

# Shortcut keys

Tombol pintasan

- F1** Mute audio  
Mendiamkan audio
- F2** Decrease volume  
Menurunkan volume
- F3** Increase volume  
Meningkatkan volume
- F4** Play previous track/chapter  
Memutar trek/bab sebelumnya
- F5** Play/Pause  
Memutar/Menjeda
- F6** Play next track/chapter  
Memutar trek/bab selanjutnya
- F8** Switch to external display  
Mengalihkan ke display eksternal
- F9** Open Search  
Membuka Pencarian
- F10** Toggle keyboard backlight (optional)  
Mengalihkan antar lampu latar keyboard (opsional)
- F11** Decrease brightness  
Menurunkan kecerahan
- F12** Increase brightness  
Meningkatkan kecerahan

**Fn** + **PrtScr** Turn off/on wireless  
Menonaktifkan/mengaktifkan nirkabel

**Fn** + **Esc** Toggle Fn-key lock  
Mengalihkan kunci tombol Fn

**Fn** + **Insert** Put the computer to sleep  
Membuat komputer tertidur

**Fn** + **H** Toggle between power and battery-status light/  
harddrive activity light  
Mengalihkan antara lampu daya dan status baterai/lampu aktivitas hard drive

**NOTE:** For more information, see *Owner's Manual* at [dell.com/support](http://dell.com/support).

**CATATAN:** Untuk informasi lebih lanjut, lihat *Panduan Pemilik* di [dell.com/support](http://dell.com/support).